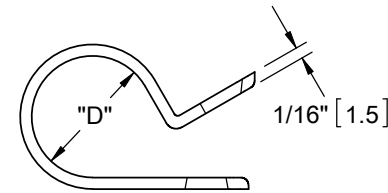
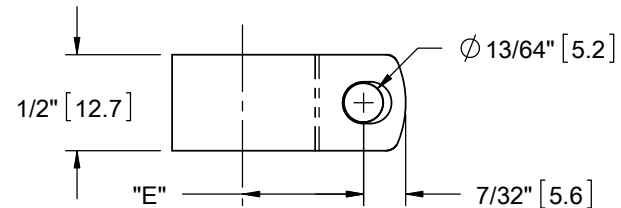


NYLON 6/6 UL 94 V-2 (RMS-01). COLOR: NATURAL PART NO.	NYLON 6/6 UL 94 V-0 (RMS-19). COLOR: NATURAL PART NO.	NYLON 6/6 UL 94 V-2 (RMS-01). COLOR: BLACK PART NO.	"D" HOLDING DIA.	"E" REF.
N-2B	N-2B-19	N-2B-BK	1/8 [3.2]	21/64 [8.3]
N-3B	N-3B-19	N-3B-BK	3/16 [4.8]	25/64 [9.9]
N-4B	N-4B-19	N-4B-BK	1/4 [6.4]	27/64 [10.7]
*N-4BE	*N-4BE-19	*N-4BE-BK	.23 [5.8]	27/64 [10.7]
N-5B	N-5B-19	N-5B-BK	5/16 [7.9]	29/64 [11.5]
N-6B	N-6B-19	N-6B-BK	3/8 [9.5]	31/64 [12.3]
N-7B	N-7B-19	N-7B-BK	7/16 [11.1]	17/32 [13.5]
N-8B	N-8B-19	N-8B-BK	1/2 [12.7]	9/16 [14.3]
N-9B	N-9B-19	N-9B-BK	9/16 [14.3]	19/32 [15]
N-10B	N-10B-19	N-10B-BK	5/8 [15.9]	5/8 [15.9]
N-11B	N-11B-19	N-11B-BK	11/16 [17.5]	21/32 [16.6]
N-12B	N-12B-19	N-12B-BK	3/4 [19.1]	49/64 [19.5]
N-14B	N-14B-19	N-14B-BK	7/8 [22.2]	13/16 [20.6]
N-16B	N-16B-19	N-16B-BK	1 [25.4]	29/32 [23]
N-18B	N-18B-19	N-18B-BK	1-1/8 [28.6]	31/32 [24.6]

*PARTS AVAILABLE BY SPECIAL ORDER-NAFTA REGION ONLY



NOTES:

1. MATERIAL: NYLON 6/6 UL 94 V-2, UV STABILIZED, (RMS-46), COLOR: BLACK
AVAILABLE BY SPECIAL ORDER ONLY.
TO ORDER ADD "-UVB" TO PART NO.

<table border="1"> <tr><td>P</td><td>SEE CO 200348 FOR CHANGES</td><td>SK</td><td>04/02/09</td></tr> <tr><td>O</td><td>SEE CO 200235 FOR CHANGES</td><td>SK</td><td>09/09/08</td></tr> <tr><td>N</td><td>SEE CO 200162 FOR CHANGES</td><td>SK</td><td>04/15/08</td></tr> <tr><td>M</td><td>SEE ECN #1215 FOR CHANGES</td><td>SK</td><td>09/13/06</td></tr> <tr><td>-</td><td>SEE ENGINEERING FOR REV A-L</td><td>-</td><td>----</td></tr> <tr><td>REV.</td><td>DESCRIPTION</td><td>ENGR.</td><td>DATE</td></tr> </table>			P	SEE CO 200348 FOR CHANGES	SK	04/02/09	O	SEE CO 200235 FOR CHANGES	SK	09/09/08	N	SEE CO 200162 FOR CHANGES	SK	04/15/08	M	SEE ECN #1215 FOR CHANGES	SK	09/13/06	-	SEE ENGINEERING FOR REV A-L	-	----	REV.	DESCRIPTION	ENGR.	DATE	<table border="1"> <tr><td colspan="4">TITLE: CABLE CLAMPS, NB SERIES</td></tr> <tr><td colspan="2">FILE #: NB</td><td>DWN: SK</td><td>APP: SK</td></tr> <tr><td>SHEET: 1 OF 1</td><td>SHEET SIZE: A</td><td>DT: 09/13/06</td><td>CHKD: SJ</td></tr> <tr><td colspan="2">RE: RICHCO, INC.</td><td colspan="2">RICHCO, INC. ENG@RICHCO-INC.COM (773) 539-4060</td></tr> </table>				TITLE: CABLE CLAMPS, NB SERIES				FILE #: NB		DWN: SK	APP: SK	SHEET: 1 OF 1	SHEET SIZE: A	DT: 09/13/06	CHKD: SJ	RE: RICHCO, INC.		RICHCO, INC. ENG@RICHCO-INC.COM (773) 539-4060		<table border="1"> <tr><td>⊕</td><td>⊖</td><td>DWG IN IN [MM]</td><td>QR</td></tr> <tr><td colspan="4">FINAL</td></tr> <tr><td colspan="3">PART #</td><td>PRINT TYPE</td></tr> <tr><td colspan="3">SEE TABLE</td><td>CA</td></tr> </table>		⊕	⊖	DWG IN IN [MM]	QR	FINAL				PART #			PRINT TYPE	SEE TABLE			CA
P	SEE CO 200348 FOR CHANGES	SK	04/02/09																																																													
O	SEE CO 200235 FOR CHANGES	SK	09/09/08																																																													
N	SEE CO 200162 FOR CHANGES	SK	04/15/08																																																													
M	SEE ECN #1215 FOR CHANGES	SK	09/13/06																																																													
-	SEE ENGINEERING FOR REV A-L	-	----																																																													
REV.	DESCRIPTION	ENGR.	DATE																																																													
TITLE: CABLE CLAMPS, NB SERIES																																																																
FILE #: NB		DWN: SK	APP: SK																																																													
SHEET: 1 OF 1	SHEET SIZE: A	DT: 09/13/06	CHKD: SJ																																																													
RE: RICHCO, INC.		RICHCO, INC. ENG@RICHCO-INC.COM (773) 539-4060																																																														
⊕	⊖	DWG IN IN [MM]	QR																																																													
FINAL																																																																
PART #			PRINT TYPE																																																													
SEE TABLE			CA																																																													